



EXMAR YACHTING

M A G A Z I N E

WARM IN WINTER SEASON

BAHAMAS
SEYCHELLES
MALDIVES

AN EXPERT APPROACH

REFIT SURVEY
IN PRACTICE

FORMULA 1

BOOK
THE MOST
THRILLING
CHARTER

SAMPLE
ITINERARY

DISCOVER
THE NILE
IN STYLE

RECOMMENDED

YACHTS
FOR SALE



TABLE OF CONTENTS

Welcome on board	01
Maldives: The flower of the Indian Ocean	02
Formula 1 Grand Prix charters	14
Enter the Seychelles experience	20
Refit survey in practice	32
Bahamas: Unmatched island vacations	36
The Bahamas and its islands	46
From Luxor to Aswan: Discover the Nile in style	54
Yachts for sale	62



WELCOME ON BOARD

I'm a sailor. I can't and won't hide it: it has made me who I am today. It's why I do what I do with all my passion and dedication; my love for floating assets is ingrained in everything I do.

The rest of the team is also made of passionate professionals, or 'professional impassionees', as well, – you won't last in the Yacht Management industry if you don't embody that dedication. It is such a pleasure to work with like-minded professionals, and I hope you can read and feel it in every word written in the second edition of this magazine.

In this series of magazines, we share our insights on yacht ownership and -management, give you a taste of the services we provide, have the chance to take a deep dive into background stories and hope to inspire new and seasoned yachtees alike. These glossies form a collection of EXMAR Yachting's DNA combined with what we get our hands dirty on as a team on a day-to-day basis. It's a pleasure to put it on paper to share with all of you.

Though I have one of the most rewarding (land-based!) jobs one can have, I am a sailor and not a writer. So let me get back to what I do best, while I leave you to enjoy the magazine.

Enjoy the read!

Xavier Ex

An aerial photograph of a yellow kayak with a person inside, floating on clear, turquoise water. The water's surface is textured with ripples and small waves, and the color transitions from a lighter blue near the kayak to a deeper blue towards the edges of the frame. The kayak is positioned in the upper left quadrant of the image.

8 DAY SAMPLE ITINERARY

MALDIVES

THE FLOWER OF
THE INDIAN OCEAN



Famous Venetian merchant traveller Marco Polo called the Maldives ‘the flower of the Indian Ocean’. The Maldives are like pearls scattered in turquoise waters. A true tropical paradise; the land of eternal summer and a carefree life. Staying here means being surrounded by palm trees, virgin beaches, crystal clear warm waters, turquoise lagoons and magnificent coral reefs with the most colourful marine life; The Maldives are a Mecca for scuba divers and a true heaven on earth, indeed.



THE MALDIVES

8 DAY SAMPLE ITINERARY

> DAY 1	MALE	nm
> DAY 2	MALE-VAKARUFAHLI BERUTHILA	nm
> DAY 3	VAKARUFAHLI BERU THILA-MAAMIGLI BERU	nm
> DAY 4	MAAMIGLI BERU-RASDHOO ATOLL	nm
> DAY 5	RASDHOO ATOLL-BANDOS	nm
> DAY 6	BANDOS	nm
> DAY 7	MEERUFENFUSHI	nm
> DAY 8	MALE	nm

nm = nautical miles

A yacht typically travels 8 to 20 nautical miles per hour, so depending on your itinerary and the amount of hours you want to spend sailing between destinations, this may affect your choice of charter yacht.

For example, Cannes to St. Tropez, is approximately 24 nm. On a medium-size sailing yacht under sail, this will take up to 3 hours, where a fast motoryacht could do this in one hour. Palma de Mallorca to Ibiza is 68 nm, translating to 8.5 hours of sailing versus 3-4 hours with a speedy motoryacht.

MALE

Male, where we usually start a charter, is a unique city. As the capital city of the Maldives, it’s the smallest capital in the world at only 2.5 km long and 1 km wide. Size doesn’t matter, though, as Male is the Maldives’ only city.

One of the main attractions of Male is the ‘Old Friday Mosque’, or Huskuru Miskiiy. The main mosque of the country has a golden dome and is made almost entirely out of carved coral stone. This magnificent building reminds us of the grandiose architecture of the past. Another impressive sight of is Male’s Mulee’aage Palace, built by Sultan Mohamed Shamsaddin III and now the residence of the Maldivian Republic President.

After a lovely time exploring all of Male’s glory, we are ready to set off for an incredible journey through the Maldives’ unique archipelago, with 1.192 coral islands, grouped into 26 coral atolls.

VAKARUFAHLI BERUTHILA

Our first stop is in the south of Ari Atoll, at a fantastic atoll with white sandy shores. Located in Digurashi, a five-kilometer-wide channel, it is a popular place among divers as it features a wide array of coral and reef fish in all colours of the rainbow. Around the thila, an underwater pinnacle, you'll find large turtles, moray eels, angelfish, coral groupers, soldierfish, nudibranchs, triggerfish and various pufferfish. There are also large overhangs with beautiful coral roofs.

Nearby, you'll find Kudarah Tila (Kudarah Nila) reef, a protected marine reserve with four large coral formations of different shapes and sizes. This is one of the best places for diving in the Maldives – definitely worth your time!



MAAMIGLI BERU

Each day on board bring new sights, stories and discoveries. Today, you will explore Maamigili Beru – an outer reef located in the very south of Ari Atoll. One of the main occupations of the population of this atoll is making sails. If 'extreme' is your second nature and you are seeking adventures, then you will love Maamigili Beru as the chances of seeing whale sharks are the biggest here.



RASDHOO ATOLL

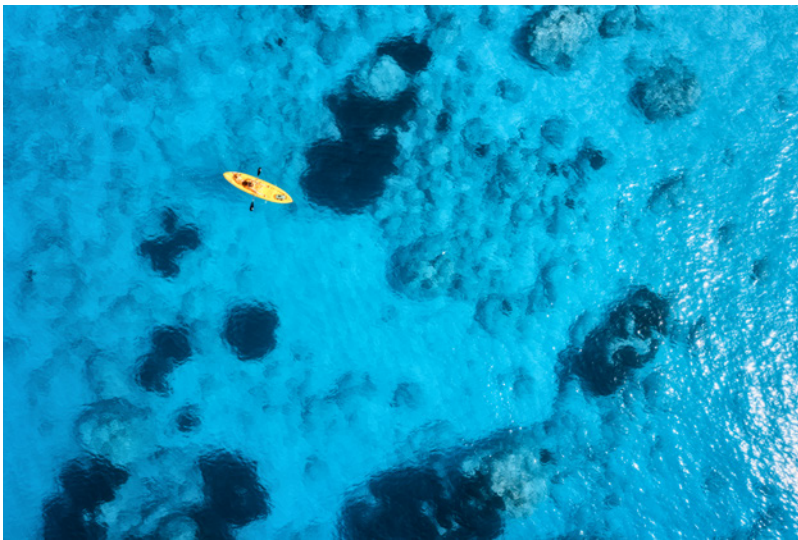
Rasdhoo Atoll is located in the North Ari Atoll, 60 km west of Male. It's a small island, at approximately 500x600 m, with a population of about 1200 people.

Rasdhoo Atoll is the ideal place for snorkeling and diving during any season. Its underwater coral world is striking in its beauty – it is home to many tropical reefs fish, gigantic moray eels and sea turtles. You are almost guaranteed to spot eagle rays during every dive! As a visitor to their extraordinary blue habitat, please don't lure or scare the animals. Better for each and all is that you 'freeze' every now and then to take in the sights and allow the curious fish to approach and inspect you, instead.

BANDOS

There is something very special about this island, and you will instantly know that is true the very second you look at your window here.

Bandos is the perfect destination for a romantic getaway. Snowy white beaches and lush green forests make this island the main attraction of the Maldives. Those of you who are still quixotic romantics, do not miss the Sunset at Huvan. Sundown at Bandos will make your Maldives travel experience complete: the perfect end to a perfect day in paradise.



MEERUFENFUSHI

Meerunfenfushi, also known as Meeru island, is a beautiful lagoon with immaculate sandy beaches, located in the east of the North Male Atoll right beyond the barrier reef.

Meerunfenfushi is the perfect place for sunbathing and swimming, away from any hustle and bustle. Plunge into silence, meditate amidst the and peace and calm of the palm groves and enjoy the small cozy beaches with their soft, snow-white sand.

MORE DESTINATIONS, ITINERARIES AND INFORMATION:
www.exmaryachting.com | charter@exmaryachting.com

RECOMMENDED
YACHTS FOR CHARTER
I N T H E M A L D I V E S



SEAREX

SEAREX is the perfect match for those who want the freedom to explore and dive, as well as for those who'd like to entertain. She offers accommodation for 16 in 8 spacious cabins with attached bathrooms. The two master suites are situated at the upper deck, providing 400 square feet of luxury. The generous windows provide a stunning view to wake up to, whatever your itinerary. With a spacious flybridge, SEAREX offers picture-perfect panoramic views.

Two stairways lead down to a large teak swimming platform for easy access into the crystal blue Maldivian waters. With the MiniMe Dive Dhoni following SEAREX to the best dive spots, the yacht is perfect for passionate underwater explorers. Plus, she is not just one of the most luxurious, but also the most environmentally friendly yacht in the Maldives.

LENGTH	38M (125'4")	BUILDER	TA MALDIVES
BEAM	9.7M (32'2")	BUILT / REFIT	2018
GUESTS	16	SUMMER LOCATION	INDIAN OCEAN
CABINS	8	WINTER LOCATION	INDIAN OCEAN
CREW	14	CHARTER PRICE (low / high)	\$84,000 / \$95,000





ARK NOBLE



Motor yacht ARK NOBLE boasts a wealth of convivial spaces, perfect for luxury yacht charters. She offers excellent versatility with her ten cabin layout which can comfortably sleep up to 20 guests. Each room features air-conditioning, flat screen TV, refrigerator, dressing table, wardrobe and en-suite bathroom.

The main deck aft is shaded by the upper deck overhang and has a casual dining and lounging area for guests to lie back and enjoy the scenery at any time of the day. Two stairways lead down to the spacious lower deck swim platform where there is easy access to the tender and water toys in addition to the lounging and sunbathing room it offers. The upper deck aft has plenty of seating along the stern for the group to entertain outdoors, and up on the sundeck the raised Jacuzzi will be a favourite place for many to lie back in the sunshine or under the stars.

LENGTH	38.10M (124'8")	BUILDER	MALDIVES SHIPYARD
BEAM	9.75M (32')	BUILT / REFIT	2015 / 2021
GUESTS	20	SUMMER LOCATION	INDIAN OCEAN
CABINS	10	WINTER LOCATION	INDIAN OCEAN
CREW	14	CHARTER PRICE (low / high)	\$60,000 / \$80,000



LEVANTE

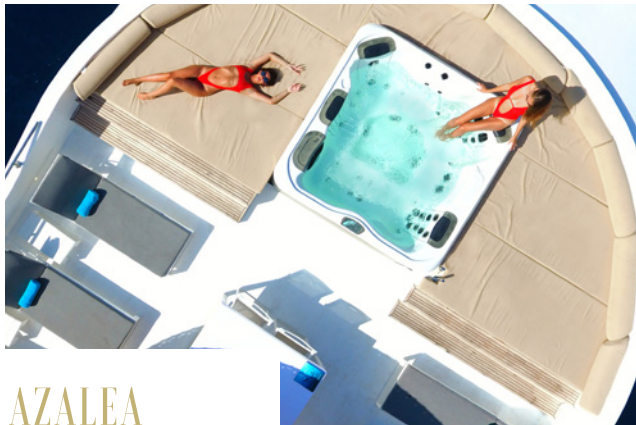


Luxury charter catamaran LEVANTE was designed with the utmost attention to detail and onboard comfort to guarantee unforgettable sailing experiences. Both the interior and the exterior are voluminous and offer ample areas for onboard entertaining. She comfortably accommodates 8 + 2 guests in one main deck master and three guest cabins located below deck, all ensuite.

All adventure seekers will be pleased to open the toy chest aboard the yacht offering two tenders, water skis for adults and children, kiteboards, windsurfing, kayaking and paddleboarding as well as diving and fishing gear. Al-fresco dining options include a sprawling aft deck and flybridge, both complete with exquisite sun pads for sweet lounging around in the warm rays.

LENGTH	23.9 M (78'5")	BUILDER	SUNREEF YACHTS
BEAM	11.6M (38'1")	BUILT / REFIT	2013
GUESTS	10	SUMMER LOCATION	INDIAN OCEAN
CABINS	4	WINTER LOCATION	INDIAN OCEAN
CREW	4	CHARTER PRICE (low / high)	€59,000 / €59,000





AZALEA

With the ability to facilitate up to 18 guests in 9 cabins – the master suite is fitted with a Jacuzzi in the en-suite bathroom, AZALEA is an exciting charter option for exploration in the Indian Ocean. Her interior boasts an exceptional contemporary feel with delicate shades of greys and whites splashed with bursts of deep reds and blues. Her furniture is designed with soft retro curves contrasted with modern edges to produce an elegant and comfortable finish.

Her notable collection of water toys includes jet-skis, a wake board, paddle-boards, three Seadoo sea scooters, a kayak, water slide and water golf, guaranteed to keep friends and family endlessly occupied in the sunshine. If this isn't quite enough, outdoors is host to a spacious swimming platform whilst her sundeck is appointed with a 6-person Jacuzzi and surrounding sun pads, ideally located for unwinding and relaxing in privacy or with other guests.

LENGTH	38,75M (127'2)	BUILDER	ALMAROON
BEAM	8M (26'3)	BUILT / REFIT	2015
GUESTS	18	SUMMER LOCATION	INDIAN OCEAN
CABINS	9	WINTER LOCATION	INDIAN OCEAN
CREW	13	CHARTER PRICE (low / high)	\$66,000 / \$77,000



LEAVE AT ANYTIME

Our commitment to you goes a long way. In fact, it takes you all the way, anywhere you would like to venture. You see, we don't just fly passengers, we accommodate guests. We meet your requests with outstanding service and dedication to detail. From engineer to crew, our team tends to your seamless and carefree travel experience. Leave the hassle to us; leave at any time. DESTINED TO DELIGHT

www.flyinggroup.aero | Tel: +32 3 286 86 00 | contact@flyinggroup.aero

FORMULA 1 GRAND PRIX CHARTERS

MONACO & YAS MARINA

A superstar experience on board a trackside yacht with a coveted viewing platform: is there a better way to experience the electrifying and thrilling event of F1 Grand Prix than on a luxury yacht charter? That is a rhetorical question, indeed!

Formula One and the yachting world have always been closely related. Ever since 1929, when the first Monaco Grand Prix race was held, yachts have been there to witness this great event.

The Monaco Grand Prix is one of the most highly-anticipated and iconic sporting events of the year, and there is no better way to experience the thrills and glamour of this race than on a superyacht.

For those who can secure a rare trackside berth in Port Hercule, the memories will last a lifetime. You will have the best vantage points to see one of the world's most riveting races, hear the immense roar and feel the vibrations of the world's leading race car drivers hurtling past the marina on the street-circuit.

There is no finer way to become immersed in the rip-roaring atmosphere of this world-class sporting event. That is probably why last year alone, over 185 yachts did not manage to secure a berth in Port Hercule to view the Monaco GP.



Yas Marina, Abu Dhabi



Already in 1929, yachts were lining up to witness this great event.



Port Hercules, Monaco

Next to the Monaco Grand Prix, the Abu Dhabi Grand Prix is the only other F1 track to have trackside berths, offering the most exclusive and advantageous viewpoints of the race.

Since its highly acclaimed debut in 2009, the Abu Dhabi Grand Prix, held at the Yas Marina circuit, has become one of the leading events of the Formula 1 calendar and is synonymous with luxury and yachting.

Racers speed through 58 laps as the Middle Eastern sun begins to set and ends in a beautifully illuminated blur of the world's most spectacular supercars under the night sky.

Viewing the Grand Prix from a yacht offers sensational views over all the action on the south circuit within the electric atmosphere of Yas Marina. Offering 227 superb berthing options for vessels measuring up to 175 metres, there are plenty of reasons to incorporate the Grand Prix into an Abu Dhabi yacht charter.

Watch the exciting acceleration of *bolides* zoom past as they come out of the chicane around the marina before disappearing through the tunnel of the illuminated five-star W Hotel. This is surely the *creme de la creme* of Formula 1 encounters.



As is clear, the F1 and Yachting Worlds have been interlinked for as long as time can tell. But that does not make it a commonality; due to limited berth capacity, it has always been and will forever remain a highly exclusive combination.

Like with most event-centred charters, the key to experiencing it for yourself, is making sure you decide and book ahead. But even more important than that is making sure you have voiced your Formula One charter dream to a reliable, independent broker. Only that way, we know that we need to contact you when an opportunity (even last minute!) presents itself.

Let's get your adrenaline racing with the charter of trackside dreams!

Mail us: charter@exmaryachting.com
 Call us: +32 3 247 61 22

RECOMMENDED YACHTS

AVAILABLE IN MONACO OR DUBAI



SERENITY J

From bow to stern, Serenity J is brimming with an fantastic array of social and dining areas, both inside and out, making her the ideal yacht for relaxing and entertaining whilst on charter.

The upper deck is designed for alfresco dining and can comfortably seat 10 guests. A symmetrical setting is created along the stern with a sofa, coffee table and armchairs on either side. On the sundeck gym equipment is provided for workouts with panoramic views. During the afternoon this becomes a popular spot with a vast sun lounging area and a Jacuzzi. By night this deck can be transformed into a party venue with disco lights and an impressive sound system. Boasting an incredible array of water toys, fun and enjoyment is guaranteed; for both those young of age and those young at heart.

LENGTH	55M (180'5")	BUILDER	AMELS
BEAM	9M (29'6")	BUILT / REFIT	2014
GUESTS	10	SUMMER LOCATION	MEDITERRANEAN
CABINS	6	WINTER LOCATION	INDIAN OCEAN
CREW	13	CHARTER PRICE (low / high)	\$275,000 / \$310,000





KATINA

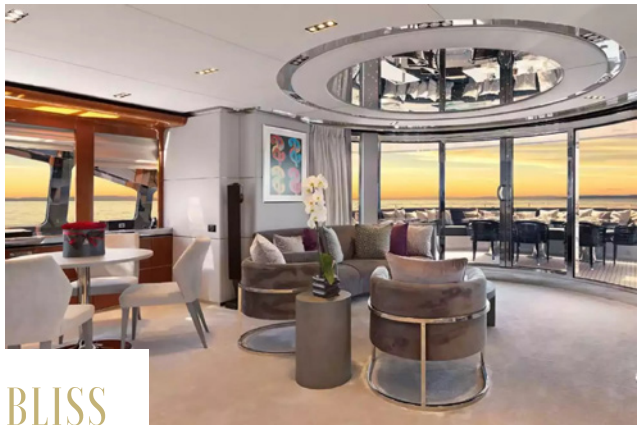


KATINA was designed with charter in mind, offering flexible accommodation and spacious entertaining areas, perfect for either families wanting to unwind or corporate charters looking for large spaces to host cocktail parties.

For those leading an active lifestyle, there is a gymnasium, as well as a great selection of water toys. To unwind after a long day exploring, the guests can enjoy the sauna or the jacuzzi, or sip a cocktail at one of the two bars.

Superb volume, wonderful entertaining areas and accommodation up to 12 guests in spacious luxurious cabins ensure every charter will be a perfect mix of luxury and fun. The top notch crew of 15 are ready to pamper the needs of the most demanding charter guests.

LENGTH	60M (196'10)	BUILDER	BRODOSPLIT
BEAM	10.68M (35')	BUILT / REFIT	2015 / 2017
GUESTS	12	SUMMER LOCATION	MEDITERRANEAN
CABINS	6	WINTER LOCATION	CARIBBEAN & INDIAN OCEAN
CREW	15	CHARTER PRICE (low / high)	€245,000 / €320,000



BLISS



With a length of 44.17m, BLISS is perfect for charter groups or families. She comfortably accommodates up to 12 guests with a layout comprising a master suite, four double cabins and a twin cabin.

The elegant main salon forms the heart of the yacht, and is perfect for entertaining, informal gatherings or simply relaxing. The upper lounge, the second central guest space, is home to a beautiful bar and comfortable seating area.

This luxury motor yacht offers expansive exterior deck space: the al fresco dining area is situated to aft on the main deck. Forward to the bow, guests will find sunpads and a sunken seating area. The upper deck boasts a Jacuzzi. When not cruising BLISS has an incredible selection of water toys and accessories for you and your guests to connect with the waters around you including towables, SUPs, jet skis, diving equipment and more.

LENGTH	44.17M (144'11)	BUILDER	HEESEN YACHTS
BEAM	9.00M (26'10)	BUILT / REFIT	2007 / 2020
GUESTS	12	SUMMER LOCATION	MEDITERRANEAN
CABINS	6	WINTER LOCATION	MIDDLE-EAST
CREW	9	CHARTER PRICE (low / high)	€155,000 / €225,000





ENTER THE

SEYCHELLES

EXPERIENCE

THE SEYCHELLES

7 DAY SAMPLE ITINERARY

> DAY 1	MAHE	nm
> DAY 2	MORNE SEYCHELLOIS NATIONAL PARK & SAINT ANNE MARINE NATIONAL PARK	nm
> DAY 3	SILHOUETTE	nm
> DAY 4	PRASLIN	nm
> DAY 5	CURIEUSE	nm
> DAY 6	LA DIGUE	nm
> DAY 7	ILE COCOS	nm

Satin sanded beaches, impressive granite boulders rising from the warm turquoise seas and jungle-carpeted hills; that’s what Seychelles is all about. Boasting an array of exotic flora and fauna, from giant tortoises and rare birds to the coco de mer palm, the 43 granite islands and 72 coral cays which form the Seychelles are the definition of paradise.

Offering plentiful opportunities for diving, snorkelling, hiking and of course relaxing, Seychelles has it all. Breathtakingly beautiful, pristine and serene, yet with plenty of entertainment options in the forms of bars and restaurants, where you can indulge on the local cuisine consisting of a plethora of fresh local fish, seafood and exotic fruits.



DAY 1 MAHE

Your charter starts from Mahe, the largest of the Seychelles islands complex, which covers 157.3 sqkm and is the epicentre of shops and evening entertainment. Mahe is the international travel hub but also boasts a plethora of over 65 white sand beaches, numerous dive- and snorkel spots. The added bonus for any explorer; a jade green interior of jungle and granite peaks – the summit of Morne Seychellois peaking 1000m above the sea. The captain will navigate you around the scenic northern tip of Mahe for snorkelling, and around secluded coves like Carana, with its palm trees and granite boulders, to the sandy Beau Vallon bay. If you are feeling lucky, this is a good spot to anchor, as it has a casino resort.

Not ready to take a bet? Continue towards Baie Ternay Marine National Park and Port Launay, both perfect for snorkelling. Beware though, as whale sharks are a common sight between August and October. Highlights include Anse Takamaka (you can take a tour of the rum distillery), Petite Anse, Anse Soleil, Anse a La Mouche and – perfect for long waterside walks and instagram reels – Grande Anse.





DAY 2 MORNE SEYCHELLOIS NATIONAL PARK & SAINTE ANNE MARINE NATIONAL PARK

Morne Seychellois National Park

The Morne Seychellois National Park consists of more than 20% of Mahe's glorious jungle interior, making it the biggest park in Seychelles. With a vast landscape spectrum - coastal mangrove forests, dense jungle and mist-covered peaks - a guided hike is the best way to learn about the islands' flora, fauna and it's evolution. Visit the nearby ruins of the first school, built by British missionaries in 1875 for the children of freed slaves, or opt to tour a working tea plantation.

Sainte Anne Marine National Park

Situated east of Victoria, Mahe's capital, eight islands and islets constitute the Sainte Anne Marine National Park. Established in 1973, it's the first of its kind in the Indian Ocean. With stunning beaches, warm emerald waters and a palette of coral gardens, it is a gem in the Seychelles' Inner Islands. The views below the water are as breathtaking as it gets. Snorkeling and diving is a class experience on its own. You will spot eagle rays, sea turtles, huge numbers of tropical fish and corals. If diving is your passion, the sea between Sainte Anne and Moyenne Islands is calling your name. For the less adventurous; Sainte Anne, the largest of the islands, and Cerf offer a number of options for cocktails with a view and local creole speciality feasts. Several of the islands offer interesting histories ready to be discovered. Don't hesitate to ask the crew.

DAY 3 SILHOUETTE

Northwest of Mahe, Silhouette is one more Seychellois hidden paradise. It is renowned for its vast spectrum of biodiversity; giant tortoises, terrapins and a variety of rare bird species live amongst its pristine green forested peaks and clear waters. Diving, fishing or other tours can be arranged by your crew at the harbour village of La Passe. Beaches on Silhouette look like you've been teleported to another planet, such as on Anse Mondon, Anse Lascar, Anse Patate and Grand Barbe. For the discerning client who wants to combine yachting with relaxing at a resort, you will find one of the most exclusive resorts in the Caribbean 6km north of Silhouette.

Cousin & Cousine Islands

Sailing to Praslin from Sainte Anne, the captain will navigate you through the small marine park islands of Cousine, with anchorage available at Cousin. Just 1km in diameter, Cousin is home to fairy terns, white-tailed tropicbirds and shearwaters. If you are a keen birdwatcher, the granite island of Aride offers seclusion and serenity for plenty more birdspotting opportunities.



DAY 4 PRASLIN

Being the second largest island of the Seychelles, Praslin is an amazing tropical paradise full of wildlife, beautiful beaches and majestic takamaka trees. Praslin is well-known as the Island of Palms due to its abundant endemic palm species found only there. There are many things to do on Praslin from beach-hopping to nature trail hiking, from kayaking and snorkelling to diving. For those who enjoys swimming and sunbathing, Praslin's beaches are numerous and pristine.

DAY 5 CURIEUSE

The island of Curieuse is the shelter of a carefully protected population of around 500 giant Aldabra tortoises, the Seychelles Black Parrots, Hawksbill and Green Sea Turtles and coco de mer palms. The island used to be called the Red Island because of the distinctive colour of the soil, but then the French renamed it in 1768. Keep in mind that anchorage is only permitted in specific areas of the island. Local authorities protect the thick mangroves, where sea turtles lay their eggs (mainly in November & December).



DAY 6 LA DIGUE

La Digue is the third largest of the islands, has an ocean hideaway feel, as well, of course, as offering a variety of the signature Seychelles' stunning white sand beaches and jade green seas. The island is home to the only remaining population of the black paradise flycatcher, a draw for birdwatchers.

The l'Union Estate and Copra Factory, a former coconut and vanilla plantation that is a real insight into La Digue colonial history, is a "must see" landmark of the island. The island's most famous beach, Anse Source d'Argent, with its snow-white sand, aquamarine water, and offshore reef, will change your usual perception about all the beaches in the world. Millions of tourists flock here every year for the towering granite rock formations, some of the most-photographed formations on Earth.





DAY 7
ILE COCOS

Close to the north coast of La Digue, the Ile Cocos Marine National Park is a small group of granite islets whose coral waters are perfect for snorkelling and diving. Get ready to play with eels, fish, rays, turtles and even whale sharks!

Bird & Denis Islands

On the most northern end of Seychelles, you find the tiny coral islands of Bird and Denis, which are all about flora and fauna. Observe numerous rare species and enjoy walking, diving and snorkelling whenever you can. Ask the crew to help you spot giant tortoises, turtles and, thousands of nesting birds.



The Outer Islands

The farthest of the islands, hundreds of kilometres to the south of the main Inner Islands group, you'll find the most remote Aldabra Atoll. It is the world's largest raised coral atoll, a World Heritage Site, populated by around 150,000 giant tortoises and thousands of migratory birds.

RECOMMENDED YACHTS FOR CHARTER

I N T H E S E Y C H E L L E S



BLEU DE NÎMES

Explorer yacht BLEU DE NÎMES is the ultimate vessel for exploring far-flung corners of the globe. She offers guest accommodation for up to 28 guests in 13 cabins and is great for families thanks to her child-friendly setup.

This luxury motor yacht with world-reaching range has a wealth of spectacular social and dining options and a highly-attentive crew. Her impressive list of amenities include a cinema room, a sauna, a massage room and gym, two Jacuzzis, plus plenty of lounging areas on the sun deck. You'll be in seventh heaven on a luxury charter aboard this phenomenal yacht.

LENGTH	72.24M (237")	BUILDER	CLELANDS SHIPBUILDING
BEAM	11.8M (38'9")	BUILT / REFIT	1980 / 2020
GUESTS	28	SUMMER LOCATION	MEDITERRANEAN
CABINS	13	WINTER LOCATION	CARIBBEAN & INDIAN OCEAN
CREW	23	CHARTER PRICE (low / high)	€ 430.000 / € 430.000





CLOUDBREAK

Delivered in 2016, CLOUDBREAK is a true masterpiece of sophistication. Her reliable crew will take you on an unforgettable journey at any time of the year, making her an ideal luxury charter yacht. CLOUDBREAK can welcome up to 12 charter guests overnight in six sumptuous staterooms.

Take the opportunity to be thoroughly pampered and indulged in the spa and in addition take a plunge in the pool under the sun. Make your day truly exceptional at the beach club or visit the well-equipped gym so that you can keep up with your fitness routine at sea. Watch a movie in the state-of-the-art cinema room, enjoy drinks in the chalet-inspired saloon, or watch the night sky from her winter garden. With CLOUDBREAK you have an open invitation to enjoy some of the most beautiful places in the world.

LENGTH	75M (246'1")	BUILDER	ABEKING & RASMUSSEN
BEAM	12.4M (40'8")	BUILT / REFIT	2016
GUESTS	12	SUMMER LOCATION	SOUTH EAST ASIA
CABINS	6	WINTER LOCATION	SOUTH EAST ASIA / SOUTH PACIFIC
CREW	22	CHARTER PRICE (low / high)	€750,000 / €750,000



MORE THAN 100 YEARS OF NAUTICAL EQUIPMENT EXPERIENCE



Landtmeters Naval Stores Group
Vosseschijsstraat 140 (Haven 140)
2030 Antwerp - Belgium
51°15'19" N | 4°24'55" E

+32 3 233 31 31
info@landtmeters.com
www.landtmeters.com
Mon-Fri: 09:00 - 17:30 • Sat: 09:00 - 12:00



REFIT SURVEY IN PRACTICE

Forward planning and streamlining the overall refit process is a vital topic in the yachting industry. Efficient use of the yachts' time and maximising the refit process is paramount, but the twin factors of time and cost often seem to work against each other. Busy yachts cannot commit early, and equally busy yards may find the quotation process and eventual inaccuracies leave the owner with a bad taste in the mouth after the refit is complete. The loss of data accrued by a vessel over its lifecycle is a major sticking point. Collecting and

disseminating the data as needed, regardless of the crew changeovers, reflagging or ownership change. Discerning who actually owns this data, and in what way it can be used, is an ongoing debate. Adding a refit survey is another dimension to the refit cycle, and it comes with its own considerations.

Our Business Unit and Technical Manager, Xavier Ex, shares his thoughts on the need for the refit survey and how EXMAR Yachting approaches the process, after completing a project in Seychelles.



Having a refit survey is an obvious benefit for forward planning and efficiency. Commercial ships count every minute they are in dry dock as profits loss and this approach is at odds with the frequently drawn out and 'let's pray for the best'-attitude that undermines some superyacht refit projects. Professional yards have systems in place to make the most of the refit period, and it is in their best interest to maximise the number of projects they can fit into a busy winter. But can yachts and management do more to streamline the process?

"I met Rory Marshall (Superyacht Paint Consultant) at YARE in 2018, who then introduced me to Alex Fassbender from Optimar," Starts Ex. "There we discussed how it would be interesting to develop a more hands-on approach from the owners and managers to the refit- and painting process." Speaking specifically to the most recent project, the 42m sailing yacht Douce France, where paint was the priority, Ex further elaborates the rationale behind completing the survey. "Most shipyards will say – hey we have our painters, who are usually contractors.

Often the pricing has only been ballparked, and by the time they start looking at the actual project, the extra costs start creeping in."

The EXMAR Yachting representatives, along with Alex Fassbender and a representative from the NAUTECH shipyard, flew out to meet the yacht in Seychelles to conduct a 3-day refit survey and pre-paint assessment. "From a management perspective, we are always encouraging crew to supply work lists well in advance. Of course, we understand that these are dynamic situations and the scope of work will evolve, but we try to look at the big picture and get the crew involved early. By then, having consultants on board who can also communicate directly with the shipyard helps create the most accurate scope of works, and we will then have the detailed report on file. In this case, the report is 21 pages long."

"The ideal situation is when you build and commission the vessel for a client, the managers follow up all maintenance, class and flag surveys from day one. This makes it very easy – all of the data then lives in-house and on your PMS system. But it does not often happen like that, and the difficulty comes when there are gaps in a vessel's lifecycle." It is when these gaps appear that Ex believes pre-refit surveys are almost imperative to avoid spiralling costs and time constraints.





One of the potential solutions is to integrate third-party software as a conduit between the different stakeholders. The dreaded excel spreadsheet elicits strong memories never-ending tabs of easily misplaced decimal points. However, Ex still sees value in centralising and keeping it relatively traditional. “An excel spreadsheet is something universal, and it takes time to build properly. But having all the other contractors and supplies integrated creates an information hub. Shipyards will use their own software and will be unlikely to change because a vessel has something different. In order to avoid the different parties working off different systems, I don’t think having a third party software in-between is the answer in the short- to medium term.”

Fitting a refit survey into an already busy schedule is one barrier to entry, the other is cost and whose responsibility it is to cover. It would be an oversimplification to say that the vessel will save €75,000 on a refit after a

€15,000 survey cost. Ex explains that the reality is that in all likelihood, the quote may actually match the estimation. The differentiation is in that the scope is unlikely to grow, and the timeframe can be communicated with relative assuredness.

The cost upfront is significant, Ex says: “We lost a complete week travelling to Seychelles. Three full days, two nights travelling there and back. We were gone from Monday morning to Friday evening. You do need to invest time and, of course, who’s going to pay for that? That depends on your relationship and negotiation with the yard, the subcontractors, the surveyors and the owner.”

To conclude, Ex stresses that these costs are offset in the long run for their clients, and that as asset managers for the yachts they represent, refit surveys are the most efficient solution to effectively refitting a superyacht.

A scenic view of a tropical beach with turquoise water. In the foreground, a large pig is swimming. In the background, another pig is visible near the shore, and a third pig is partially visible behind the main text. The beach is sandy and lined with lush green vegetation under a blue sky with scattered clouds.

EXPERIENCE THE

BAHAMAS

UNMATCHED ISLAND
VACATIONS

THE BAHAMAS

8 DAY USVI & BVI'S

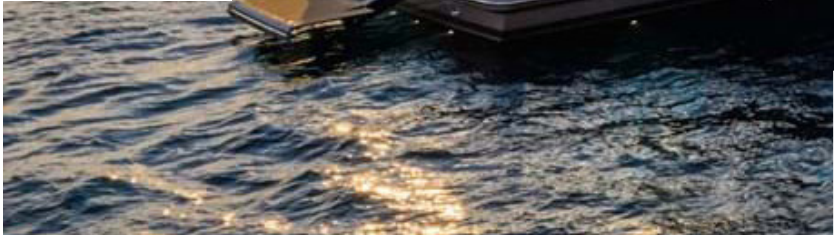
- > **DAY 1** ST. THOMAS TO TRUNK BAY, ST. JOHN 11 nm
- > **DAY 2** THOMAS TO TRUNK BAY, ST. JOHN, TORTOLA 5 nm
- > **DAY 3** TORTOLA TO PETER ISLAND 9 nm
- > **DAY 4** PETER ISLAND TO THE BATHS, VIRGIN GORDA 15 nm
- > **DAY 5** VIRGIN GORDA TO CANE GARDEN BAY, TORTOLA 15 nm
- > **DAY 6** CANE GARDEN BAY TO JOST VAN DYKE 5 nm
- > **DAY 7** JOST VAN DYKE TO ST JOHN 13 nm
- > **DAY 8** ST JOHN TOT ST THOMAS 10 nm

The U.S. and British Virgin Islands are among the most popular yacht charter destinations in the world. With shopping hubs like Mongoose Junction on St. John, beach bars like Foxy's on Jost Van Dyke, and world-renowned snorkeling venues like The Baths on Virgin Gorda, the Virgin Islands offer a wide variety of fun. This round-trip itinerary from St. Thomas gives you plenty of time for multiple stops in both the U.S. and British Virgin Islands. Note the short cruising distances between most of the islands, one of the features that make the Virgins such a terrific yacht charter destination.

DAY 1 ST. THOMAS TO TRUNK BAY, ST. JOHN

In St. Thomas, USVI, you can shop for souvenirs inside centuries-old warehouses that used to supply sailors with molasses, rum, and spices, or meander through the modern promenade

at Yacht Haven Grande marina. After a quick cruise to Trunk Bay, the crystal-clear waters will beckon. This is the home of the Virgin Islands National Park Underwater Snorkel Trail, with underwater signs to help you learn about the coral and more.



DAY 2 ST. THOMAS TO TRUNK BAY, ST. JOHN, TORTOLA

Soper's Hole Wharf and Marina welcomes you to the BVI via Pusser's Landing, where upper- and lower level

restaurants serve a combination of fine cuisine and casual fare. The Pusser's Painkiller is famous for living up to its name, offered in three different strengths of rum combined with pineapple juice, cream of coconut, and orange juice topped with fresh nutmeg.

DAY 3 TORTOLA TO PETER ISLAND

Peter Island boasts white, sandy beaches that are ideal for swimming and snorkelling or taking a romantic walk at the end of a fun-filled day. Dozens of scuba diving sites are nearby, making Peter Island a must-see for anyone interested in water sports. Several restaurants offer various styles of cuisine, or you can dine on your yacht with a breathtaking view of the coastline after all the day-trippers have gone.



DAY 4 PETER ISLAND TO THE BATHS, VIRGIN GORDA

The Baths are an interesting geological formation and protected national park that make Virgin Gorda one of the most popular tourist destinations in all of the Virgin Islands. Climb and swim within formations of natural boulders that form tidal pools, tunnels, arches and grotoes, many within view of your charter yacht's anchoring location.

DAY 5 VIRGIN GORDA TO CANE GARDEN BAY, TORTOLA

Cane Garden Bay is home to everything from pretty beaches to restaurants and music filled bars. A special treat here is a walk from the beach to Callwood Distillery, whose buildings are believed to date to 1700s. Today, Calwood is one of the only two rum distilleries in the British Virgin Islands making 80 proof rum from pure sugar cane without any preservatives.

DAY 6 CANE GARDEN BAY TO JOST VAN DYKE

Jost Van Dyke is home to two of the most popular beach bars in the Virgin Islands: Foxy's on Great Harbour, and the Soggy Dollar Bar on White Bay. Few places in the world are better for sipping drinks, taking a refreshing swim, and then dancing well into the night. Great Harbour is particularly popular on New Year's Eve, when countless boaters jam the local watering holes.



DAY 7
JOST VAN DYKE
TO ST JOHN

Cane Garden Bay is home to everything from pretty beaches to restaurants and music-filled bars. A special treat here is a walk from the beach to Callwood Distillery, whose buildings are believed to date back to the 1700s. Today, Callwood is one of the only two rum distilleries in the British Virgin Islands, making 80% proof rum from pure sugar cane without any preservatives.

DAY 8
ST JOHN TO ST THOMAS

The international airport of St Thomas is within quick driving distance of your charter yacht's Marina, making transfers from the boat easy. Depending on your flight time, you can enjoy last-minute shopping or a leisurely breakfast onboard before departing at the end of a memory-filled yacht charter vacation.

RECOMMENDED YACHTS FOR CHARTER

I N T H E B A H A M A S



RELENTLESS II 80

RELENTLESS II 80 has been designed to comfortably accommodate up to 8 charter guests in 4 suites. The guest cabins comprise a primary suite with a king size bed and en-suite bathroom facilities and 3 cabins with a queen size bed and en-suite bathroom facilities. The crew of 4 will ensure you have a relaxed and enjoyable charter experience with all of your needs catered for while on board.

Large outside spaces provide a range of alternatives for alfresco dining, sunbathing, and relaxing. The spacious fly-bridge has moveable chairs, a Jacuzzi, a fully-equipped wet bar, a grill, and huge sunpads. For the more adventurous there's a wide range of water sports equipment, such as seabobs, paddle boards, wakeboards and snorkeling gear

LENGTH	24.4M (80')	BUILDER	SUNREEF YACHTS
BEAM	11.58M (38')	BUILT / REFIT	2022
GUESTS	8	SUMMER LOCATION	CARIBBEAN
CABINS	4	WINTER LOCATION	CARIBBEAN
CREW	4	CHARTER PRICE (low / high)	\$93,700 / \$100,000





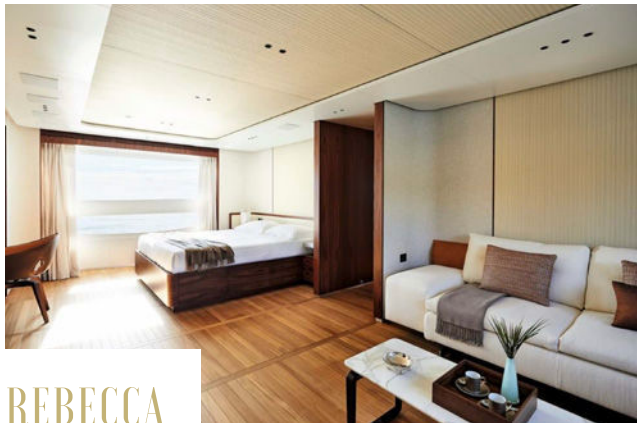
YOLO II

LENGTH	15.8M (51')	BUILDER	LAGOON
BEAM	9.1M (29'10)	BUILT / REFIT	2013 / 2018
GUESTS	6	SUMMER LOCATION	CARIBBEAN
CABINS	3	WINTER LOCATION	CARIBBEAN
CREW	2	CHARTER PRICE (low / high)	FROM €16,673



LA GATTA

LENGTH	23.29M (76')	BUILDER	LAGOON
BEAM	11M (36')	BUILT / REFIT	2019
GUESTS	8	SUMMER LOCATION	USVI, BVI
CABINS	4	WINTER LOCATION	USVI, BVI
CREW	4	CHARTER PRICE (low / high)	€49,000 / €69,000



REBECCA



Inspired by nature, REBECCA is a celebration of both life on the water and time outside in the clean, invigorating ocean air. Her three spacious decks are designed to provide a strong sense of continuity between exterior and interior spaces. The main and upper deck have large windows enabling natural light to be used as a design element. You will enjoy an intense intimacy with the sea and unprecedented atmosphere of freedom.

The main deck salon features a luxurious dining area, while the wet bar and lounge area are ideal for spending time with friends and family. The sundeck is equipped with Jacuzzi, shaded alfresco dining area, bar and ample sunpads. The foredeck hosts a vast seating and relaxation area with two tables and optional shade for enjoying snacks and beverages at any time. At the bow is the sunbathing area with sun pads and cushions for ultimate relaxation. On the upper deck aft guests can stretch on plush sofas and socialise.

LENGTH	40.8M (133'8)	BUILDER	BENETTI
BEAM	8.3M (27'2)	BUILT / REFIT	2020
GUESTS	10/11	SUMMER LOCATION	BAHAMAS
CABINS	5	WINTER LOCATION	BAHAMAS
CREW	7	CHARTER PRICE (low / high)	\$196,000 / \$224,000



THE BAHAMAS AND ITS ISLANDS



TROPIC OF CANCER BEACH: THE EXUMAS

In The Exumas-realm of 365 islands and cays, Tropic of Cante Beach is the queen of white gold sand and crystal clear waters. She boasts miles of sand while mangroves, dunes and grass-beds carve the surrounding National Park's wealthy landscape. Pristine and alluring are the powerful attractions of beaching here, where few inhabitants and even fewer visitors are yet to conquer the shores.



CAPE SANTA MARIA: LONG ISLAND

The ethereal beauty of Long Island offers the island jewel of Cape Santa Maria, featuring panoramic views across a peaceful haven of white-washed waters melting into a stretch of azure sea. Feeling every inch a tropical paradise, with leaning palm trees framing its melting sunset, Cape Santa Marla bursts with romantic splendour, making it a perfect day's escape.



STOCKING ISLAND: THE EXUMAS

The Exumas offer a chain of beauteous islands that encapsulate untouched nature and solitude. Stocking Island, just off Great Exuma, is no exception. Offering miles of unspoilt beach, this four-mile long island looks out onto stunning views of Elizabeth Harbour, fringed with flora flourishing from its hilltops. Enjoy a dip by Harborside Beach or bask in the geological wonders of the Angelfish Blue Hole.



TAHITI BEACH ABACO

Tahiti Beach is a coconut-tree studded stretch with off-the-beaten-track status and unpretentious seclusion. The real special something comes at low tide, when sands take the opportunity to break through glassy waters and reveal themselves in all of their splendour. Watch pastel skies crash into deep waves and soft sand-bars emerge, transforming sleepy shores into dramatic island vistas.



SUGAR BEACH GREAT HARBOUR CAY

Between rock and ruin: the shelling at Sugar Beach in Great Harbour Cay is nothing short of superb. Cream- coloured cliffs front mysterious creeks and elegant coves present the most peaceful beaches in this oft-dubbed 'prettiest place in the Bahamas'. An inviting network of caves provide the hiding place for an abundance of wildlife and solace-seeking travellers alike.



PINK SANDS BEACH: HARBOUR ISLAND

Matching the charming pastel-coloured homes of The Bahamas is Harbour Island, home to the famous Pink Sands Beach a stretch of three plus miles, cloaked in a soft-pink glaze. Recognised as one of the most awe-inspiring beaches, its hues are produced by marine creatures home to its coral reefs. Horseback riders can be found here gently dotting the horizon, where the turquoise waters meet the dramatic island scenery.



SHROUD CAY: THE EXUMAS

Shroud Cay of The Exumas boasts a rustic charm with true Bahamian flair. Its dusty white sands trim the coastline where kayaks can be found floating across the mangrove creeks. Home to rare majestic birds, it has a sense of untamed beauty. Dense mangroves make lazy afternoons on Shroud Cay simply unforgettable. As nature trails weave the stunning island terrain, you'll find this northern hideaway a true treasure of The Exumas.



PIG BEACH: THE EXUMAS

Whispering waves, gently swaying palms and powdered shores are the undeniable ingredients in The Bahamas' recipe for a perfect beach. But if you're craving a refreshing taste, there's always Pig Beach in The Exumas. Enjoy the saccharine dusting of its swimming pigs, whose origins have slowly descended into the most endearing myth. The icing on the cake? Their friendly Bahamian spirit makes them seasoned snorkelling companions and failing that, they'll be sure to polish off any left-over picnic.



LADY SHARON GALE

LENGTH	34.11M (111'11)	BUILDER	BROWARD
BEAM	6.1M (20')	BUILT / REFIT	1999 / 2018
GUESTS	8	SUMMER LOCATION	CARIBBEAN
CABINS	4	WINTER LOCATION	CARIBBEAN
CREW	4	CHARTER PRICE (low / high)	\$52,000 / \$68,000



MARE BLU

LENGTH	19.51M (64')	BUILDER	LAGOON
BEAM	10.01M (32'10)	BUILT / REFIT	2018
GUESTS	8	SUMMER LOCATION	BAHAMAS, ST MARTIN
CABINS	4	WINTER LOCATION	BAHAMAS, ST MARTIN
CREW	2	CHARTER PRICE (low / high)	\$31,000 / \$39,000



AURELIUS



The eternally elegant AURELIUS 111 will take your breath away as she unfurls her sails and sets a course to her next destination. Offering a wealth of luxurious spacious living areas befitting her pedigree build, a yacht charter aboard this classic vessel has all the ingredients to be truly magical.

Families will particularly love AURELIUS 111 thanks to her child-friendly setup. She offers guest accommodation for up to 6 guests with a layout comprising a master suite and two twin cabins. There are 7 beds in total, including 1 queen and 2 pullmans. She is also capable of carrying up to 3 crew onboard to ensure a relaxed luxury yacht charter experience. Set against the backdrop of your chosen cruising ground, you and your guests can enjoy fun on the water with the collection of water toys and accessories aboard AURELIUS 111.

LENGTH	33.83M (111')	BUILDER	JACHT ONTWIKKELINGS
BEAM	7.1M (23'4)	BUILT / REFIT	2011
GUESTS	6	SUMMER LOCATION	CARIBBEAN
CABINS	3	WINTER LOCATION	CARIBBEAN
CREW	3	CHARTER PRICE (low / high)	\$64,000 / \$64,000





KARIBU

LENGTH	27M (88'7)	BUILDER	OYSTER YACHTS
BEAM	6.3M (20'8)	BUILT / REFIT	2013 / 2022
GUESTS	8	SUMMER LOCATION	MEDITERRANEAN
CABINS	4	WINTER LOCATION	CARIBBEAN
CREW	4	CHARTER PRICE (low / high)	\$45,000 / \$50,000



OCEAN STAR

LENGTH	18.28M (60')	BUILDER	BENETEAU
BEAM	4.57M (15')	BUILT / REFIT	2015
GUESTS	6	SUMMER LOCATION	CARIBBEAN
CABINS	3	WINTER LOCATION	CARIBBEAN
CREW	2	CHARTER PRICE (low / high)	\$16,700 / \$19,500



FINE GARDENS

HIGH-END AND EXCLUSIVE GARDENS



We strive to make your world blossom.

www.finegardens.be - +32 473 72 31 08 - info@finegardens.be

SAMPLE ITINERARY
LUXOR TO ASWAN

THE NILE

7 DAYS / 8 NIGHTS

DAY 1

We will meet and assist you at Luxor airport at your preferred time, for private transportation to your yacht.

- 12:00 Embarkation in Luxor
- 12:30 Lunch on board
- 14:00 Visit East Bank (Karnak & Luxor Temples)
- 19:00 Reception cocktails & safety brief
- 19:30 Dinner on board
- 21:30 Entertainment (belly dancer show) at the sundeck

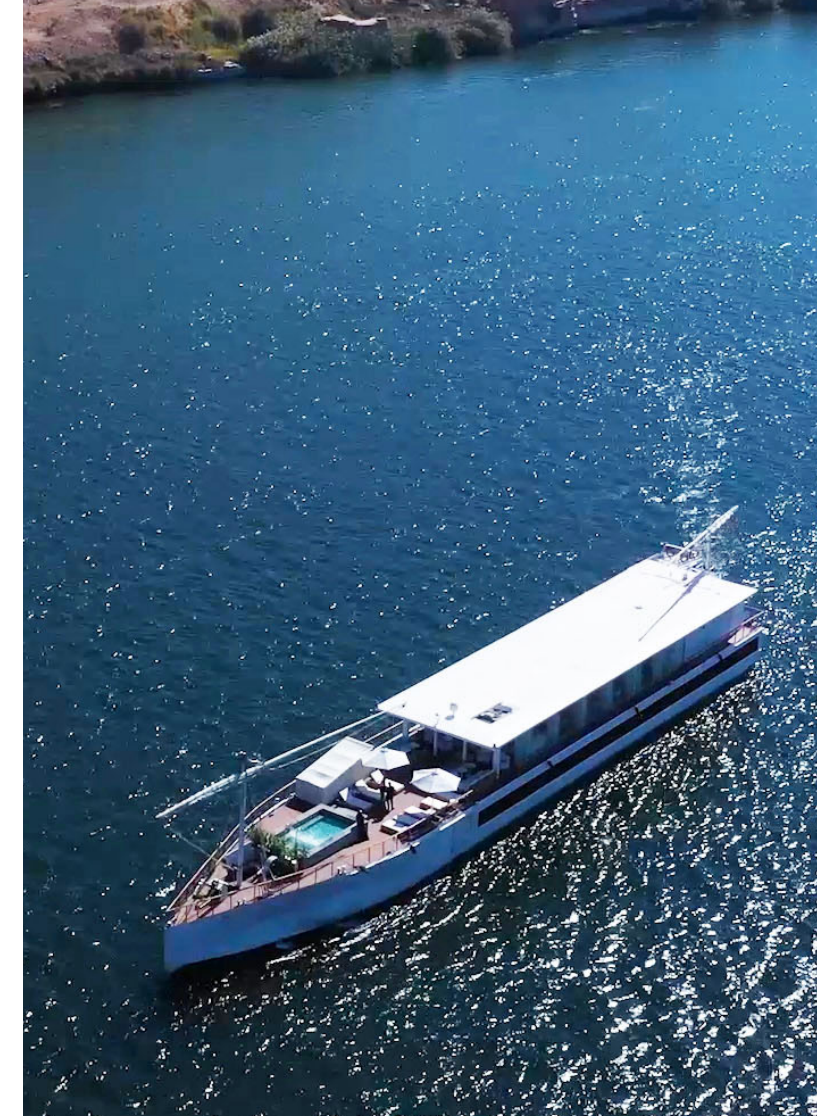
Overnight stay: Luxor



DAY 3

- 6:30 Breakfast with a view
- 8:00 Visit Dendera Temple
- 10:00 Sailing from QENA to ESNA (16h)
- 13:00 Lunch on board
- 16:00 High tea is served
- 20:00 Dinner on board
- 21:30 Movie night while sailing
- 00:00 Arrival in Esna

Overnight stay: Esna



DAY 2

- 6:00 Breakfast on board
- 7:30 Visit west bank's Valley of the Kings & Hatchepsut Temple
- 13:00 Lunch on board
- 13:00 Sail from Luxor to Qena (8h)
- 16:00 High Tea-time
- 19:00 Dinner is served
- 21:00 Arrival in Qena and onboard entertainment (Oriental Takht)

Overnight stay: Qena



DAY 4

- 7:00 Passing Esna Lock, heading to Edfu (8h)
- 8:00 Breakfast is served
- 12:30 Lunch on board
- 15:00 Arrive to Edfu to visit its temple
- 16:30 High tea while sailing
- 17:00 Sail from to Besaw Village (4h)
- 19:30 Dinner on board
- 21:00 Arrive Besaw Village

Overnight stay: Besaw Village

DAY 5

- 7:00** Breakfast on board
- 8:00** Visit Besaw Village and meet locals for a unique experience
- 9:30** Sailing from Besaw Village to Komobo (4h)
- 12:30** Lunch on board
- 14:00** Visit Komobo Temple
- 15:30** Sail from Komobo to Herbyab Island (3h)
- 16:30** High tea on board
- 20:00** Candle-light gourmet dinner on the island with folkloric show

Overnight stay: Herbyab Island



DAY 7

- 9:00** Breakfast on board
- 10:30** Full day visiting Aswan's Philae Temple, High Dame & Nubian Village
- 15:00** Lunch on board
- 20:30** Gala Dinner and entertainment onboard

Overnight stay: Aswan



DAY 6

- 9:00** Sparkling breakfast on the island
- 9:00** Leisure day on the sandy beach island for a swimming experience in the Nile river. Fishing and lunch on the island
- 16:00** Sailing from Herbyab Island to Aswan (3h)
- 16:30** Afternoon tea onboard while sailing
Dinner onboard while sailing
- 20:00** to Aswan

Overnight stay: Aswan



DAY 8

- 6:30** Final breakfast on board
- 8:30** Disembarkation and private transfer to Aswan Airport at your preferred time.

Are you looking to explore the Nile in style? We have a team of experts and available yachts awaiting your arrival.



AVAILABLE YACHT FOR CHARTER

I N T H E N I L E R E G I O N



BERGE

BERGE dazzles guests with her lavish interiors and spacious decks. The lounge on the upper deck can host up to 18 guests should you wish to celebrate a special occasion. Guests are invited to enjoy all-day beverages and daily afternoon tea in the lounge area before taking a relaxing dip in the plunge pool.

During your stay you will experience Egyptian culture during an oriental night, tasting traditional foods and dancing the night away to Arabic music. In addition, a gourmet candle light dinner offers a once in a lifetime experience to dine on a private island by the Nile, gazing at the stars and enjoying delicious local cuisine.

LENGTH	55M (180'44)	BUILDER	CUSTOM SAIL YACHT
BEAM	8.5M (27'88)	BUILT / REFIT	2021
GUESTS	18	SUMMER LOCATION	EGYPT
CABINS	9	WINTER LOCATION	EGYPT
CREW	19	CHARTER PRICE (low / high)	\$88,800 / \$124,320





YACHTS FOR
SALE

IN THE SPOTLIGHT



SEAXPLORER 60

The SeaXplorer 60 is 60 metres in length (almost 200 ft) with 4 decks totaling approximately 1,850 square metres (20,000 sq ft) of outdoor deck and interior area. For her 12 guests on board, she has impressive capability and extensive provisions so that her 17 crew can provide full luxury service for up to 30 days without port call. She has hybrid power and propulsion, carrying your choice from a wide range of tenders (up to 10,5 metres), toys and helicopters.

The explorer yacht features large volume luxury interiors and lots of expedition capability, including wide customisation possibilities for tropical, polar and all sorts of adventures in between.

LENGTH	60M (197'-2")	BUILDER	DAMEN YACHTING
BEAM	11M (36'1")	GUESTS	12
DRAFT	3.6M (11'81)	CABINS	6
BUILT / REFIT	2024	LOCATION	NETHERLANDS
SPEED (CRUISING / MAX)	11.5 / 14.5	ASKING PRICE	UPON REQUEST



THINK BIGGER

LENGTH	37.04M (122'-6")	BUILDER	CUSTOM LINE SPA
BEAM	8.0m (26'3")	GUESTS	10
DRAFT	2.27m (7'45)	CABINS	5
BUILT / REFIT	2022	LOCATION	SPAIN
SPEED (CRUISING / MAX)	12 / 15.5	ASKING PRICE	€16,500,000



COME TOGETHER

LENGTH	60M (196' 11")	BUILDER	AMELS
BEAM	10.4M (34'2)	GUESTS	14
DRAFT	3.35M (11')	CABINS	6
BUILT / REFIT	2022	LOCATION	VALENCIA, SPAIN
SPEED (CRUISING / MAX)	13 / 15.5	ASKING PRICE	€69,500,000





FEATURED YACHT FOR SALE

BERZINC



Built in steel and aluminium by Spanish yard Astilleros de Mallorca to Bureau Veritas class, motor yacht BERZINC was designed by Camper & Nicholsons and launched in 1977. In partnership with naval architects Navirex and designer Felix Buitendijk, she was at Balk Shipyard in Holland from 2004 to 2007. During this time, she was sand blasted back to bare metal, internally gutted, and comprehensively rebuilt from the lengthened hull up.

The works included the 5-year special class renewal survey, full maintenance of the main engines, installation of new generators and a comprehensive underwater hull refit. Having undergone a significant refit over the past 18 months, she is now ready for viewings in the South of France.

BERZINC’s twin 1,050hp MTU engines give her a range of 3,500 nautical miles, and she is fitted with zero speed stabilisers.

BERZINC showcases a light, modern interior. The superyacht’s spaces are adorned with an all-white décor with pops of color and contrasting dark wood floors to create a clean, crisp ambience. The yacht’s main salon and skylounge both provide inviting spaces to entertain guests or relax in comfort. She accommodates twelve guests in five ensuite staterooms. These comprise a master suite, two double staterooms and two Pullman twins.

Ready summer 2022, she is an excellent opportunity to purchase a popular charter vessel.

LENGTH	44.68m (146’ 8”)	BUILDER	ASTILLEROS DE MALLORCA
BEAM	7.16m (23’ 6”)	GUESTS	12
DRAFT	2.8m (9’ 3”)	CABINS	5
BUILT / REFIT	1977 / 2012	LOCATION	FRANCE
SPEED (CRUISING / MAX)	12 / 14 knots	ASKING PRICE	€3,600,000





INTI CUBE

LENGTH	28.65M (94')	BUILDER	WALLY
BEAM	6.4M (21')	GUESTS	6
DRAFT	4.2M (13'10")	CABINS	3
BUILT / REFIT	2005	LOCATION	LA SPEZIA, ITALY
SPEED (CRUISING / MAX)	10 / 12	ASKING PRICE	€3,600,000



ELENA OF LONDON

Elena of London is a sailing yacht with a length of 55.0m. The yacht's builder is Factoria Naval Marin from Spain who delivered superyacht Elena of London in 2009. Previously named Elena, she features exterior design by Herreshoff, with naval architecture by Acubens. Up to 8 guests are accommodated on board this superyacht, and she also has accommodation for 8 crew members including the captain of Elena of London. The yacht has a steel hull and superstructure. She is powered by 1 MAN engine, which gives her a top speed of 13.6 knots. The yacht has a range of 10.0/3000 n/m nautical miles. The yacht carries 15,000 liters of fuel on board, and 10,000 liters of water.

LENGTH	55.0M (180'5")	BUILDER	FACTORIA NAVAL MARIN
BEAM	8.14M (26'8")	GUESTS	8
DRAFT	5.2M (17'1")	CABINS	4
BUILT / REFIT	2009	LOCATION	UPON REQUEST
SPEED (MAX)	13.6	ASKING PRICE	€12,000,000



GWEILO

LENGTH	47.4M (156'-6")	BUILDER	MENGI YAY
BEAM	8.35M (27'5")	GUESTS	8
DRAFT	4.7M (15'6")	CABINS	3
BUILT / REFIT	2009 / 2021	LOCATION	UPON REQUEST
SPEED (CRUISING / MAX)	11 / 16	ASKING PRICE	€6,100,000





GIJA

LENGTH	23.99M (79' 4")	BUILDER	SUNREEF
BEAM	11.53M (38' 2")	GUESTS	6
DRAFT	2.2m (7' 3")	CABINS	3
BUILT / REFIT	2019	LOCATION	LOANO, ITALY
SPEED (CRUISING / MAX)	10 / 12	ASKING PRICE	€5,400,000



IPHARRA

LENGTH	31.10M (102')	BUILDER	SUNREEF YACHTS
BEAM	12.00M (39' 4")	GUESTS	12
DRAFT	3.30M (10' 9")	CABINS	5
BUILT / REFIT	2009	LOCATION	LA CIOTAT, FRANCE
SPEED (CRUISING / MAX)	12 / 14	ASKING PRICE	€4,900,000



EXMAR YACHTING



exmar-yachting



exmar_yachting



exmaryachting

De Gerlachekaai 20 - 2000 Antwerp - Belgium
contact@exmaryachting.com | +32 3 247 50 00

WWW.EXMARYACHTING.COM

TYAX

LODGE & HELISKIING



Unparalleled Luxury. Unlimited Skiing. Unmatched Exclusivity.

Indulge yourself and your guests with an exclusive, full-service team in your own luxurious, private chalet. You'll have your own chef, massage therapist and concierge—as well as your own pilot and expert guides—with one of the top heliskiing operations in the world.

Let us help you plan your perfect package.

Direct access via helicopter
from Vancouver, BC, Canada

tyax.com